

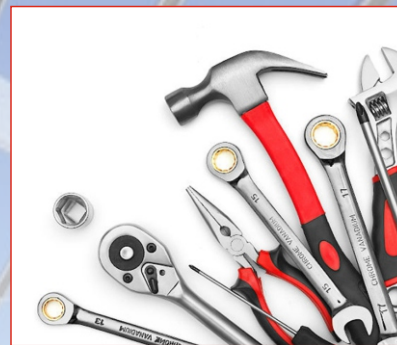


PROP. Rajinder Singh  
+ 91-94170-40664

# ASTRO PLUS



Concrete Mixture / **Fabrication Works**  
**& HAND TOOLS**



## ASTRO PLUS

AN ISO 9001: 2015 CERTIFIED CO.

M : +91-94170-40664, +91-84372-40663

www.astrottoolsindia.com | Email : astroplus.lidh@gmail.com, info@astrottoolsindia.com

Plant : 151/1C, Industrial Area C, Opp. Hero Cycle, Sua Road Giaspura Ludhiana (INDIA)

Office : 14869, Street No. 8, Parbhat Nagar Dholewal, Ludhiana 141003

**SISTER CONCERN : ASTRO TOOLS INDIA (REGD.)**



www.astrottoolsindia.com

*Quality Products Begin With  
Quality Thinking!*





## COMPANY PROFILE

The strength of **Astro Tools India (Regd)**. is based on the skills & professionalism of its staff and system adopted by the management right from the sourcing of raw materials to the dispatch of goods. Expert technical staff ensuring high quality consciousness rigorous checking of products regularly at the various stages of production. Beside the company guarantee high quality of products it is committed to render efficient services too. The company also ensures execution of orders and supply within stipulated time. The company is going up with renewed confidence to meet the need of tomorrow. In the infrastructural base assures the development of high performance products within the time frame.

## INFRASTRUCTURE

We have modern machinery and equipments to ensure and maintain quality at all steps . We have latest quality testing machine and control method and highly motivated technicians, professionals, skilled and well trained work force to continuous improvement in quality. The company has the ability to supply multi products orders within delivery schedule to market around the globe. The strength of Astro Tools India is based on the skills & professionalism of its staff and system adopted by the management right from the sourcing of raw materials to the dispatch of goods. Expert technical staff ensuring high quality consciousness rigorous checking of products regularly at the various stages of production.

## Concrete Mixer Machine



### TECHNICAL SPECIFICATIONS

Description	Description	Description	Description
Models	A-250	A-350	A-500
Discharging volume (L)	300	350	450
Charging Volume (L)	450	550	650
Capacity (M3/H)	8-10	10-12	12-16
Max. Aggregate Size (MM)	80	80	80
Mixing Drum Rotational Speed(r/Min)	16	16	12
Engine Power (HP)	10	14	20
Max.Towing Speed (Km/H)	18	18	18
Overall Dimension( L x W x H)mm	2820 x 2425 x 2800	4500 x 2600 x 3200	5800 x 2600 x 6500

## HYDRAULIC OIL TANK

- Oil tank capacity is more than 80l compared with other supply tank and can be filled more oil one time prevent the temperature goes highly during working process

## CONCRETE MIXING DRUM

- The Drum Thickness Q345 With Thickness 6mm
- The Drum Thickness Q345 With Thickness 6mm
- Easy Maintenance Base on the Bolt Connected
- Easy Maintenance Base on the Bolt Connected
- Design of Gear Ring. Transmission of Power more Stable
- Design of Gear Ring. Transmission of Power more Stable

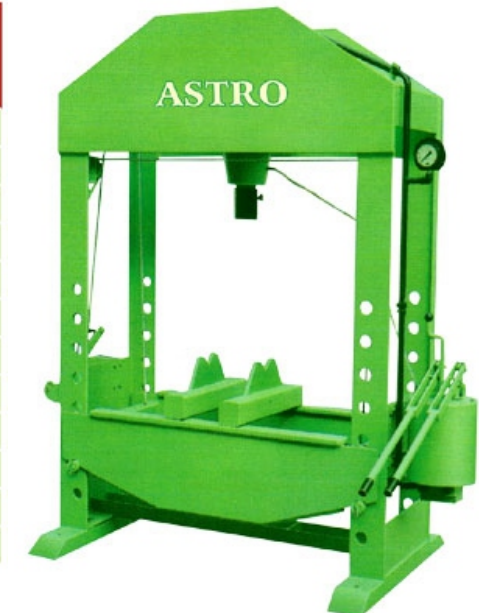
## RIDING WHEEL

- Longer service life Rotation of drum more smoothly and stably
- Transmission system is run by superior company motors and heavy duty gear boxes for longevity and more efficiently

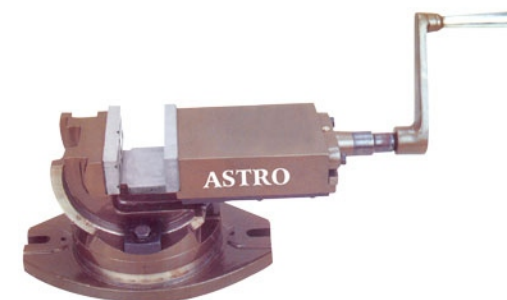


## HYDRAULIC MANUAL PRESS

Capacity in Tons	Between Column Length mm x Breadth mm	Between Ram to Bed Min. mm x Max. mm	Travel of Ram In mm	Motor H.P.
5	500 x 125	75 x 600	100	3
10	600 x 150	75 x 600	125	3
15	650 x 150	75x 600	150	3
25	850 x 300	180 x 910	180	3
40	950 x 350	180 x 910	190	3
50	1000 x 400	180 x 950	200	5
60	1050 x 450	180 x 975	200	5
75	1150 x 500	180 x 975	210	5
100	1200 x 600	180 x 975	225	5
150	1300 x 625	180 x 975	240	10
200	1325 x 650	180 x 975	240	15
250	1350 x 650	180 x 975	250	20



## TILTING & SWIVELING VICE



### Tilting & Swiveling Vice

Size in Inch	4	5	6	8
Width of Jaws in MM	100	125	150	200
Opening of Jaws in MM	100	125	150	200
Depth of Jaws in MM	38	50	50	60
Length Overall in MM	340	460	485	635
Height Overall in MM	150	180	195	230
Weight (Approx) in Kgs	17	31	42	77

## ROTARY TABLE

### Rotary Table

Size in Inch	6	8	10	12	15	18	20	24	30	
Dia of Table in MM	150	200	250	300	375	450	500	600	750	
Center Bush Bour	2	3	3	3	3	3	4	4	4	
Worm & Gear Ratio or Partey Demant	1:40	1:40	1:40	1:40	1:40	1:40	1:40	1:40	1:40	
Overall Height in MM Horizontal Position	100	112	117	125	135	150	152	165	190	
Height in Vertical Position in MM	250	305	355	435	485	590	625	750	880	
Base to Center Vertical Tipe	130	150	180	220	240	290	315	375	475	
Approx Weight in Kg	19	29	47	78	100	135	165	260	525	
No. of Indexing Holes	11, 13, 16, 17, 18, 19, 25, 27, 33, 37, 41, 43 49, 51					7, 9, 11, 13, 15, 16, 17, 18, 19, 20, 21, 23, 25, 27, 29, 31, 33, 37, 39, 41, 47, 49, 51, 53				





# Hand Tools

9001:2015 COMPANY

## VICE



### Size Range:

Range Size mm				Regular Size inch		
6	13	20	27	1/4"	5/8"	1"
7	14	21	28	5/16"	11/16"	1-1/6"
8	15	22	29	3/8"	3/4"	1-1/8"
9	16	23	30	7/16"	13/16"	1-1/4"
10	17	24	32	1/2"	7/8"	
11	18	25		9/16"	15/16"	
12	19	26				



### Size Range:

Size Available
6x7, 8x9, 10x11, 12x13, 14x15, 16x17, 18x19, 20x22, 21x23, 24x27, 25x28, 30x32mm
8x10, 10x12, 10x13, 11x13, 12x14, 13x17, 14x14, 17x19, 19x22, 22x24, 24x26, 27x32mm

## DRILL MACHINE

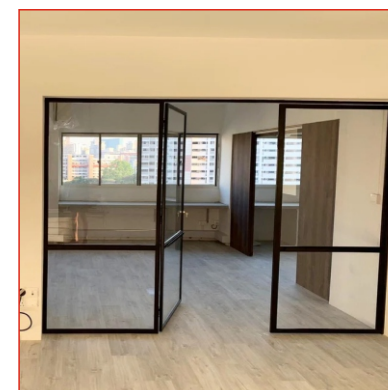


Specifications	A-12	A-15	A-20	A-25	A-32	A-38
Drilling Capacity in mild steel	12 MM	15 MM	19 MM	25 MM	32 MM	38 MM
Pillar Diameter	46 MM	58 MM	90 MM	90 MM	114 MM	114 MM
Spindle Nose to Table Distance	330 MM	480 MM	430 MM	710 MM	760 MM	815 MM
Distance From Spindle Centre to pillar Surface (in mm)	150MM	177 MM	210 MM	260 MM	300 MM	310 MM
Table Travel	215 MM	305 MM	380 MM	485 MM	485 MM	485 MM
Taper in Spindle	1/2" Drill	MT 2	MT 2	MT 3	MT 4	MT 4
Number of Speed	4 Speed	4 Speed	8 Speed	8 Speed	8 Speed	8 Speed
Spindle Travel	75 MM	100 MM	140 MM	165 MM	190 MM	190 MM
Pillar Length	690 MM	840 MM	990 MM	1450 MM	1490 MM	1510 MM
Overall Height with pulley grand	860 MM	1143 MM	1295 MM	1840 MM	1880 MM	1900 MM
V-Belt Section	A	A	A	B	B	B
Weight (Approx.)	40 kg	60 kg	125 kg	180 kg	250 kg	300 kg
Ram Diameter (mm)	49 MM	49 MM	58 MM	64 MM	74 MM	74 MM
Motor Required	0.5 H.P	0.5 H.P	1 H.P	1 H.P	1.5 H.P	2 H.P
R.P.M. of Motor	1440	1440	1440	1440	960	960

# FABRICATION & WELDING WORKS



## OUR PROJECTS & OFFERINGS



- Fabrication & Erection
- Mild Steel Fabrication
- Structural Steel Fabrication
- Stainless Steel Fabrication
- Aluminum Fabrication
- Sheet Cutting & Bending
- All Type of Welding Works



# Hand Tools

ISO 9001:2015 COMPANY

## PLIER



### COMBINATION PLIER

Drop forged from carbon steel.  
Sleeve on handles for comfortable cushion grip.  
Hardened & Tempered Jaws

Size (Inch)	Size (mm)	Pcs. Per Master Carton
6	150	84
7	175	72
8	200	60



### LONG NOSE PLIER

Drop forged from carbon steel.  
Sleeve on handles for comfortable cushion grip.  
Hardened & Tempered Jaws

Size (Inch)	Size (mm)	Pcs. Per Master Carton
6	150	84
7	175	72
8	200	60

## PIPE WRENCH



### PIPE WRENCH STILLSON TYPE

Drop forged, carbon steel & hardened teeth.

Size (Inch)	Size (mm)	Pcs. Per Master Carton
8	200	72
10	250	48
12	300	36
14	350	24
18	450	16
24	600	8
36	900	4



### PIPE WRENCH - RIDGID TYPE

This Heavy Duty Pipe Wrench is specially used in the oil, gas and Civil engineering Industries.

Size (Inch)	Size (mm)	Pcs. Per Master Carton
8	200	72
10	250	48
12	300	36
14	350	24
18	450	16
24	600	8

## DOVTAIL SQUARE



### DOVTAIL SQUARE

These handy little squares have spring steel blades riveted to brass faced rosewood stocks and come in two versions, 1:6 for softwood and 1:8 for hardwoods suitable for dovetail joint markings.

Size (Inch.)	Size (inch)
1:6	1:8



### CARPENTRY TRY SQUARE, WOODEN HANDLE

A multi purpose tool combining the functions of Try & Mitre Square. Stock are made from best quality rosewood, faced with brass and spring steel blade. The blade is securely held by three brass rivets. Try & Mitre squares are available in four sizes

Size (Inch.)	Brass End	Size (Inch.)	Brass End
3"	Single	3"	Double
6"	Single	6"	Double
9"	Single	9"	Double
12"	Single	12"	Double



# Hand Tools

ISO 9001:2015 COMPANY

## VICE



### ALL STEEL VICE FIX BASE

Manufactured from high tensile mild steel plates. Face jaws are manufactured from high carbon heat-treated steel.

Size (Inch.)	Size (mm)	No.	Pcs. Per Master Carton
3	75	1	6
4	100	3	4
5	125	5	2
6	150	6	1
8	200	8	1



### ALL STEEL VICE SWIVEL BASE

Manufactured from high tensile mild steel plates. Low profile 360° swivel base locks at any desired angle. Face jaws are manufactured from high carbon heat-treated steel.

Size (Inch.)	Size (mm)	No.	Pcs. Per Master Carton
3	75	1	6
4	100	3	4
5	125	5	2
6	150	6	1
8	200	8	1

## BALL PEIN HAMMER



### BALL PEIN HAMMER WITH WOODEN HANDLE

Drop forged carbon steel. Heat treated

Size (Lbs.)	Size (gms)	Pcs. Per Master Carton
1/4	100	120
1/2	200	72
3/4	300	48
1	500	36
1.1/4	600	24
1.1/2	800	24
2	900	16



### CLAW HAMMER WOODEN HANDLE - AMERICAN TYPE

Drop forged carbon steel. Heat treated.

Size (Lbs.)	Size (gms)	Pcs. Per Master Carton
1/2	225	72
1	450	36

## IRON JACK PLANES



### SMOOTHING PLANE

Made from fine grained grey iron body castings for strength and stability. Cut iron made from high carbon steel.

Size (mm)
245



### IRON JACK PLANES

Jack Plane, Casted Body, Plain Base, Fine Polished Wood, Steel / Brass Screws, Fully Hardened Blade

Size (Inch.)	Inner Box (Qty.)	Pcs. Per Master Carton
Size 4 (8")	1	12
Size 5 (14")	1	10
Size 6 (18")	1	6
Size 7 (22")	1	6

Single

Double